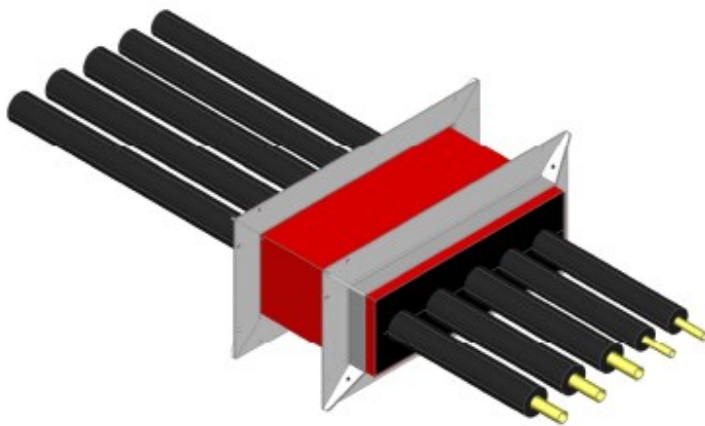




# FyreCLAMP™

## FIRE RATED SERVICE TRANSITS



Trafalgar Fyreclamps are an intumescent type product designed to prevent the spread of fire through service penetrations. Over 300 fire tests have been conducted on a multitude of service types, service configurations and wall, floor and ceiling types. The Fyreclamp is by far the most fire tested product in the world.

Think of Fyreclamps as fire rated holes. The Fyreclamp system allows building designers and service consultants to identify the required location for services and specify the required Fyreclamp configuration. Of course, with our assistance and advice. Construction documentation can then identify these as the only approved path for services in the building for each specific trade. This ensures that all services are adequately fire stopped. The best part is that the system is a permanent system and will not require fire stopping again for the life of the building!

### APPLICATION

Fyreclamps are suitable for use in any building where penetrations are made through walls, floors and ceilings for services. They are tested and approved for the following services.

- Electrical, data, communication cables
- Steel and plastic pipes
- Insulated copper pipes
- Plastic conduits



### KEY FEATURES AND BENEFITS

- Known and trusted brand - Benchmark Quality
- Modular system available for separation of services
- Up to 4 hour fire ratings
- Ideal for both retrofit and new build applications
- Fire tested empty and all the way up to completely full
- Available in a range of shapes & sizes, to suit whole cable trays & single cable bundles
- Easy Installation
- For further information on these products, contact Trafalgar

The information contained in this brochure was correct at the time of printing. E&OE

**Trafalgar** is the well respected brand, synonymous with the supply of engineered solutions for the containment of fire, smoke and sound. As the foremost Australian owned supplier of passive fire protection systems, Trafalgar's products have been specified and installed into Australian buildings for over 60 years.

*Trafalgar*  
Since 1945

CONTAINMENT & ACCESS SOLUTIONS  
WHOLLY AUSTRALIAN OWNED

## FYRECLAMPS FIRE RATED SERVICE TRANSITS

Name	Configuration	Available Sizes (nominal)			Product Code
Square	Single	65mm SQ,	100mm SQ		CT120
Duplex	Modular	130 x 65mm	200 x 100mm		CT120-DUPLEX
Triplex	Modular	200 x 65mm	300 x 100mm		CT120-TRIPLEX
Sixplex	Modular	200 x 130mm	300 x 200mm		CT120-SIXPLEX
Round	Single	50mm OD	100mm OD	150mm OD	CT120R
Maxi	Single	350 x 125mm	550 X 125mm		CT240

## PRODUCT DESCRIPTION

**BODY** - Red powdered coated body, for high on site visibility.

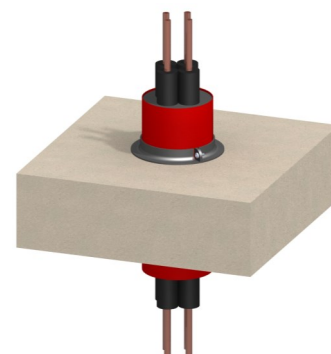
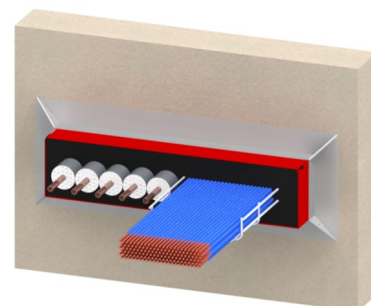
**FLANGES** - A pair of steel friction fastening flanges are included with each Fyreclamp.

**INSTALLATION** - Installation is application dependant. Please consult Trafalgar's printed installation instructions available on requested.

**TESTING** - Trafalgar Fyreclamps are fire tested and fully approved to AS1530.4 and AS4072.1 for use with a multitude of services.

**MAINTENANCE** - Trafalgar Fyreclamps require no maintenance.

**ALSO AVAILABLE** - Trafalgar offers a complete range of other fire stopping and fireproofing products.



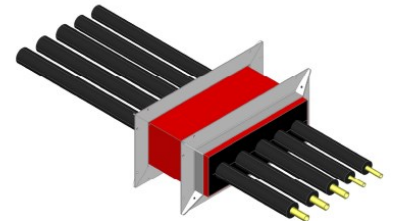
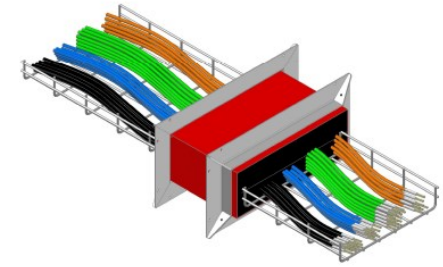
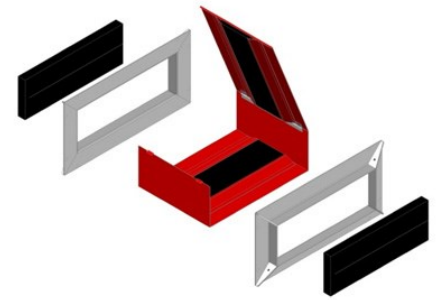
## SPECIFICATION

All trades are to route their services which penetrate fire barriers, through Trafalgar Fyreclamp (T:1800 888 714). No additional holes are to be made in any fire barrier unless it is protected by a Trafalgar Fyreclamp.

All installations shall be in strict accordance with Trafalgar's installation instructions, AS1530.4 and AS4072.1 as appropriate.

The Trafalgar Fyreclamp shell contains a hinged door to allow for easy retrofit where required. The Fyreclamp shall be a minimum of 200mm long and constructed of 1.2mm thick powder coated mild steel.

Trafalgar reserves the right to change specifications without notice. Please check with your supplier at the time of order.



**MULTISERVICE FIRE STOPPING DEVICE**

- 🔥 Designed with facility managers in mind
- 🔥 Fully approved for cables & cable trays
- 🔥 Fully approved for insulated copper
- 🔥 Suitable for new or existing services
- 🔥 Full range of sizes & configurations

**ROUND**



Available 50mm, 100mm and 150mm diameters. Ideal for retrofitting into standard core holes. Trafalgar's round Fyreclamps are ideal for fire stopping of electrical power, comms or data cables and insulated copper pipe penetrations.

**SQUARE**



Available in 65m & 100m sizes. Trafalgar's square Fyreclamps are ideal for fire stopping of electrical power, comms or data cables and insulated copper pipe penetrations.

**MODULAR**



These configurations consist of banks of the square Fyreclamps and can be duplex, triplex and sixplex. Perfectly suited for segregation of service types, adding additional capacity and expandability to cater for future works.

**MAXI**



Designed originally to cater for cable trays and cables and currently available in a range of sizes up to 550mm wide. Can be used for all penetration types including cable trays, multiple and bulked insulated copper pipe penetrations, mechanical service penetrations, mixed services and large penetration requirements.

Trafalgar reserves the right to change specifications without notice. Please check with your supplier at the time of order.