



# FyreSET™



Comes in a 10kg bag

## FIRE RATED MORTAR

**Trafalgar FyreSet** mortar is a special cement based mixture formulated specifically for fire rating applications, in particular openings in fire barriers that include complicated or mixed service penetration types.









FyreSet is easily mixed on site with water to a required consistency for either pouring or towelling into wall or floor slabs.

FyreSet has been fire tested in numerous configurations and with a multitude of service penetration types as required by the Building Code of Australia.

FyreSet mortar has over 25 years of proven performance in Australia's harshest building site conditions.

**Warning** - FyreSet mortar is non-load bearing.

## KEY FEATURES AND BENEFITS

-  Known and trusted brand - Benchmark Quality
-  Australian made using Australian raw materials
-  Lightweight
-  Up to 4 hours fire ratings. (For full FRL, FyreWrap insulation will be required for some services)
-  Does not shrink in fire conditions
-  Tested with most service penetration types
-  Readily cut, drilled and shaped with ordinary wood working tools
-  Flush mounted and surface mounted testing

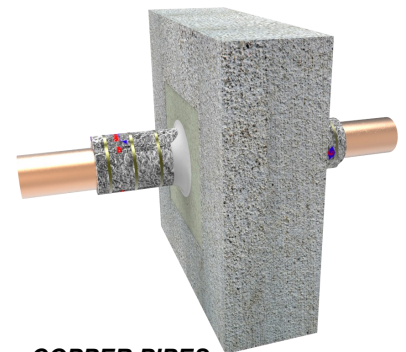
## APPLICATION

**FyreSet Mortar** is used for fire stopping of service penetrations in wall and floor openings where a specific FRL has to be maintained.

- Sealing of cables and pipe penetrations.
- Ideal where difficult penetrations require complex cutting and shaping of preformed materials.
- Suitable for use in walls and floors.

## ⚠ IMPORTANT NOTES

1. Trafalgar FyreFlex sealant to be used around openings.
2. If full insulation rating (temperature rise) is required for the FRL, FyreWrap will need to be wrapped on ductile services such as cable trays and steel and copper pipes for example.
3. Not suitable for use around plastic pipe and plastic conduits (Trafalgar Maxilite Board and FyreChoke Collars are recommended in this case).



**COPPER PIPES**  
FRL -/120/120 with FyreWrap Insulation System \*

The information contained in this brochure was correct at the time of printing. E&OE

**Trafalgar** is the well respected brand, synonymous with the supply of engineered solutions for the containment of fire, smoke and sound. As the foremost Australian owned supplier of passive fire protection systems, Trafalgar's products have been specified and installed into Australian buildings for over 70 years.

*Trafalgar*  
Since 1945

CONTAINMENT & ACCESS SOLUTIONS  
WHOLLY AUSTRALIAN OWNED

## FYRESET FIRE RATED MORTAR

Maximum Size Opening	Fire Resistance Level	Mortar Thickness
<b>Floor Slabs</b>		
600mm x 600mm	-/180/180	80mm
700mm x 1000mm	-/240/240	180mm
<b>Walls</b>		
600mm x 600mm	-/120/120	90mm
1120mm x 1000mm	-/240/180	140mm

## PRODUCT DESCRIPTION

**COLOUR** - Neutral grey.

**MIXING** – Each 10kg bag mixes with water to form approximately 14 litres of mixture. Mix FyreSet with between 4 and 6 litres of water depending on the required stiffness of the mix.

**DRYING TIME** – FyreSet is cement based and has a good pot life making it ideal for contractors who want to minimise waste.

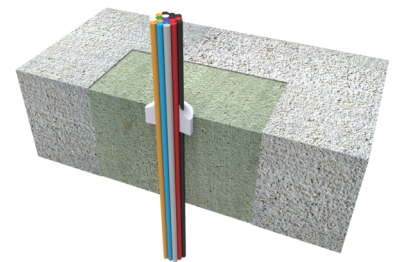
**STORAGE & HANDLING** – All materials shall be stored under cover, in a manner that will prevent damage (preferably on pallets). FyreSet mortar must be kept dry at all times.

**TESTING** - Tested to AS1530.4 and AS4072.1 standards

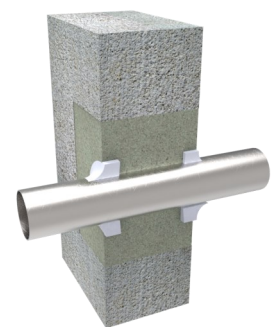
**ENVIRONMENT** - Easy clean-up, low Volatile Organic Compounds (VOC) and Ozone Depleting Potential (ODP) formula.

**SAFETY** - Please refer to product MSDS for full safety information. FyreSet mortar is non load bearing.

**ALSO AVAILABLE** – Trafalgar offers a complete range of other fire stopping and fireproofing products.



**CABLE BUNDLE**  
FRL up to -/240/90, OR -/240/120  
with FyreWrap Insulation System \*



**STEEL PIPES**  
FRL up to -/240/30, OR -/240/120  
with FyreWrap Insulation System \*

## SPECIFICATION

All openings are to be sealed, so as to maintain the FRL of the element (floor or wall) in accordance with AS1530.4 using Trafalgar FyreSet mortar systems as detailed in Trafalgar's printed installation instructions. When full insulation rating (temperature rise) is required for the FRL, FyreWrap will be needed to be wrapped on ductile services such as cable trays and steel and copper pipes for example.

\* Refer to Trafalgar's installation instructions.

Trafalgar reserves the right to change specifications without notice. Please check with your supplier at the time of order.