

# FIRE DOOR LEAVES

## Double acting fire door leaves 1hr & 2hr

### DESCRIPTION

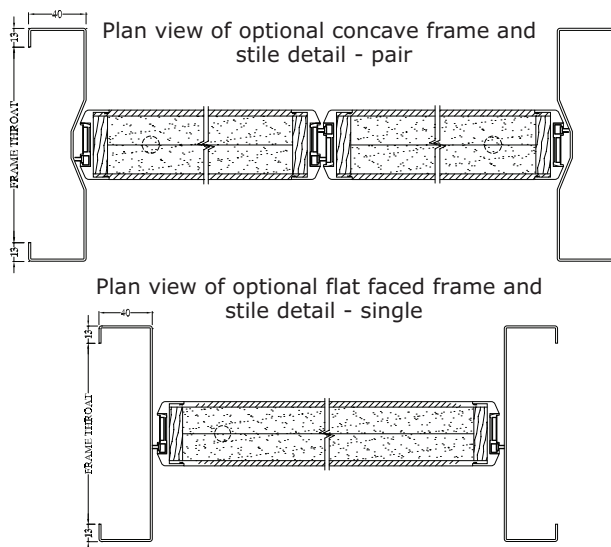
Timber Fire door leaves utilising the latest Pyropanel fire resistant door core and design technology, these doors are fully tested and certified to AS1530.4 and AS1905.1, and have the benefit of a double action swinging mechanism.

### APPLICATIONS

Ideal for heavy traffic areas where two way swing is an important function, and where fire resistance of up to 2 hours is required. Typical installations include hospitals, public buildings, corridors, nursing homes, schools, etc.

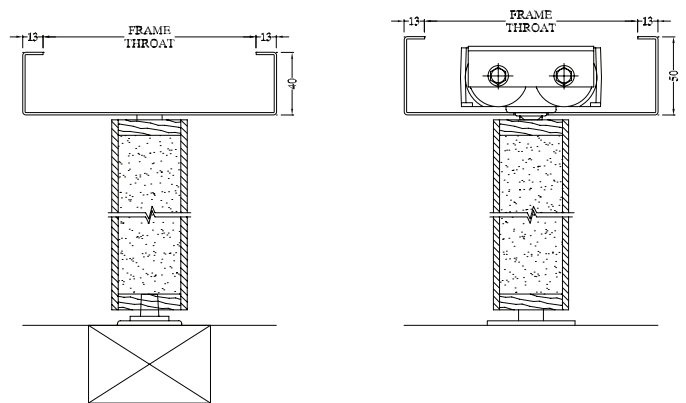
### FEATURES

- For use in 1hr and 2hr plasterboard stud walls, fire rated masonry walls, gypsum block walls, aerated concrete blocks and wall panels. Refer to Pyropanel if your wall type is not listed.
- Available in pairs or singles.
- 48mm (nom) thickness.
- Approx weight (ply wood faced): 22kg/m<sup>2</sup>.
- Fully tested and certified up to -/120/30 FRL.
- Special meeting stiles incorporating extruded aluminium section with integrated intumescent smoke seals.
- Suitable for Pyropanel Pressed Metal Door Frames designed specifically for double acting doors, available in flat faced or concave (please specify desired finish)
- Ply faces.
- Can be fitted with either floor springs or transom (overhead) closers.



### OPTIONAL EXTRAS

- Veneer, steel, aluminium, PVC or laminate facings
- Vision panels up to 300 x 200 or 600 x 100.
- Kick Panels of Stainless Steel, Acrovyn, Kydex, etc, to selected height
- Other testing standards are approved - refer Pyropanel for more information.
- Smoke seals are not approved for head of door.



Typical head and floor section detail.

### MODELS AVAILABLE

Model	FRL	Thickness	Max Leaf size - Single	Max Leaf size - Pair
PDAFD060-48	-/60/60#	48	2400 x 1200	2400 x 1200/1200
PDAFD120-48	-/120/60#	48	2400 x 1200	2400 x 1200/1200

# Maximum Insulation rating shown. Some wall applications have the standard 30 minute Insulation rating.

### HOW TO SPECIFY

Eg, "Door to be a Pyropanel PDAFD060-48 Double Acting Fire Rated Door, 48mm thick, -/60/30\* FRL, Ply face\*, mounted in special Pyropanel Pressed Metal Door Frame with flat\* / concave\* finish, with the following options: (eg, vision panels, kick panels, etc\*).

\* denotes example - delete, change or specify as required

**Pyropanel Developments Pty Ltd**  
 Unit 1, 97 Lewis Rd, Wantirna South, Vic 3152  
 Ph: (03) 9837 8500 Fax: (03) 9837 8550  
 Email: [sales@pyropanel.com.au](mailto:sales@pyropanel.com.au)  
 Web: [www.pyropanel.com.au](http://www.pyropanel.com.au)

**Distributed by:**