

FIRE DOOR LEAVES

Fire door with panel over (no transom)

DESCRIPTION

Timber fire door leaves and panel over with no separating transom utilising the latest Pyropanel fire resistant door core and design technology. These doorsets are fully tested and certified to AS1530.4 and AS1905.1, and are available in a variety of sizes and finishes in 30 minute, 1 hour, and 2 hour fire resistance levels.

APPLICATIONS

Ideal for applications that require a certified fire door and a panel over without a separating transom. Typically found in office lobbies, hospitals, schools, public buildings, shopping centres, factories, warehouses, plant rooms, etc.

FEATURES

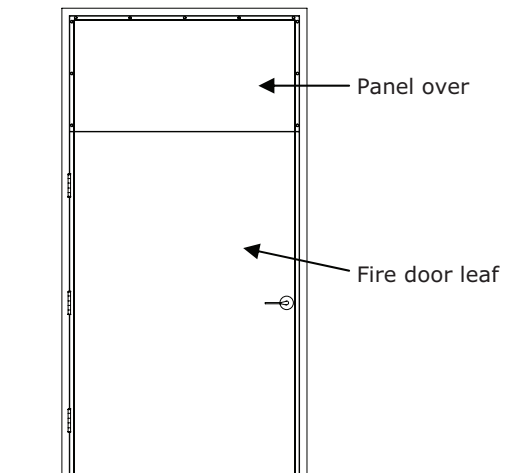
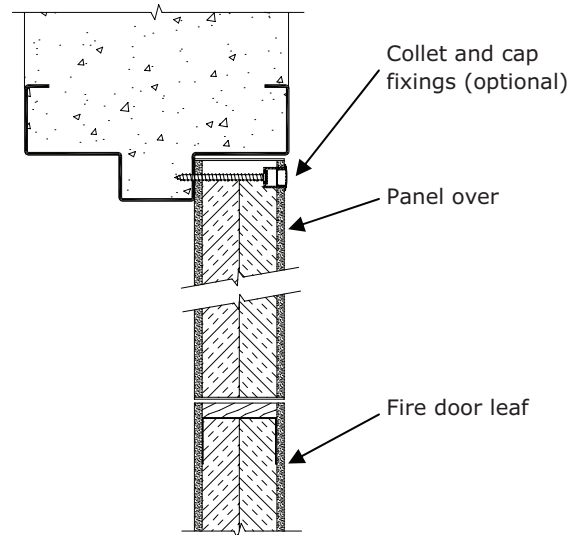
- Single leaf configurations only.
- Door and panel are 48mm thick.
- Pressed metal door frames only.
- Ply face.
- Panel is screw fixed, with optional collet and cap fixings.
- Maximum overall size, including door leaf and panel:
 - 3600 high x 1200 wide
- (refer to Pyropanel FD-01 **Timber fire door leaves tech sheet** for more details and features on fire door leaves)

OPTIONAL EXTRAS

- Steel, aluminium, PVC & Laminate.
- Vision panels up to 300 x 200 or 600 x 100mm for fire door using clear fire rated glass
- Kick panels of stainless steel to selected height.
- Smoke seals, viewing lens, electric strikes and locks, panic bars, magnetic hold open devices, etc, are all optional hardware items - Refer to Pyropanel hardware tech sheet for the latest edition of the approved hardware, or contact Pyropanel for any items that are not listed.

MODELS AVAILABLE

| Model | Description | Max FRL | Thickness | Max overall size (leaf and panel) |
|---------|----------------------------|----------|-----------|-----------------------------------|
| FDPO-NT | Panel over with no transom | -/120/30 | 48 | 3600 x 1200 |



HOW TO SPECIFY

"Door to be a (eg) Pyropanel PFD060-48* Fire Rated Door, 48mm thick, -/60/30 FRL, Ply face*, mounted in Pyropanel PMDF / Pyropanel Fire rated steel door frame with a Pyropanel **FDPO-NT (FIRE DOOR PANEL OVER WITH NO TRANSOM)**, and the following options: (eg, vision panels, kick panels, etc*),

* denotes example - delete, change or specify as required

Pyropanel Developments Pty Ltd

Unit 1, 97 Lewis Rd, Wantirna South, Vic 3152

Ph: **(03) 9837 8500** Fax: (03) 9837 8550

Email: sales@pyropanel.com.au

Web: www.pyropanel.com.au

Distributed by: